

Cystatin C

Catalog Number: 21108

Gene Symbol: Cystatin C

Description: Anti-Cystatin C Rabbit Polyclonal Antibody

Background: Cystatin C, belongs to the cystatin family, is an inhibitor of cysteine proteinases, and is thought to serve an important physiological role as a local regulator of this enzyme activity. It is secreted. Cystatin C is expressed in the highest levels in the epididymis, vas deferens, brain, thymus, and ovary and the lowest in the submandibular gland. It is a potential cerebrospinal fluid marker for the diagnosis of Creutzfeldt-Jakob disease.

Immunogen: A synthetic peptide from the internal region of Cystatin C, human origin.

Tested applications: ELISA, WB, IHC, IP

Recommended dilutions:

ELISA: 1:100-1:5000

WB: 1:100-1:1000

IHC: 1:100-1:1000

Concentration: 0.1 mg/ml

Host: Rabbit

Clonality: Polyclonal

Isotype: IgG

Purity: Purified from serum

Format: Liquid

Storage buffer:

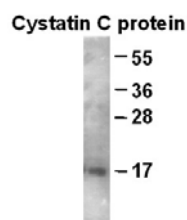
Preservative: no

Constituents: PBS (without Mg^{2+} and Ca^{2+}), pH 7.4, 150 mM NaCl, 50% glycerol.

Species Reactivity: Cystatin C antibody recognizes Cystatin C proteins of vertebrates.

Storage Conditions: Store at $-20^{\circ}C$. Avoid freeze / thaw cycles.

Western blot:



WB: Anti-Cystatin C pAb

Western blot analysis of recombinant full length Cystatin C protein. Purified His-tagged Cystatin C protein (Cat.#10157) with anti-Cystatin C polyclonal antibody (Cat.# 21108) at 1:100 dilution.

For research use only. Not for diagnostic or therapeutic applications.