

Active $G\alpha_{13}$

Catalog Number: 26902

Gene Symbol: Gna13

Description: Anti-Active $G\alpha_{13}$ -GTP Mouse Monoclonal Antibody

Background: Heterotrimeric G proteins are essential cellular signal transducers. $G\alpha_{13}$ is one of the G proteins that could mediate cell migration and angiogenesis. Other biochemical and physiological functions of $G\alpha_{13}$ are being explored.

Immunogen: Recombinant full length active $G\alpha_{13}$ protein

Tested applications: IP, IHC

Recommended dilutions:

1 μ g for 1~2 mg total cellular proteins

Concentration: 1 mg/ml

Host: mouse

Clonality: Monoclonal

Isotype: IgG1, IgG2b

Purity : Purified from ascites

Format: Liquid

Storage buffer:

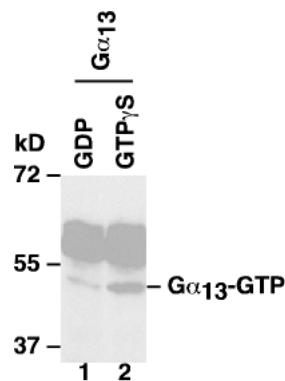
Preservative: no

Constituents: PBS (without Mg^{2+} and Ca^{2+}), pH 7.4, 150 mM NaCl, 50% glycerol

Species Reactivity: Anti-active $G\alpha_{13}$ monoclonal antibody recognizes active $G\alpha_{13}$ of vertebrates.

Storage Conditions: Store at $-20^{\circ}C$. Avoid freeze / thaw cycles

Immunoprecipitation/Western blot:



IP: anti-active $G\alpha_{13}$ mAb

WB: anti- $G\alpha_{13}$ mAb

IP/WB analysis of active $G\alpha_{13}$ proteins. Purified $G\alpha_{13}$ proteins were treated with GDP (lane 1) or GTP γ S (lane 2). After immunoprecipitation with anti-active $G\alpha_{13}$ -GTP mouse monoclonal antibody (Cat. # 26902), these proteins were separated by SDS/PAGE and western blotted with anti- $G\alpha_{13}$ mouse monoclonal antibody (Cat. # 26004).

For research use only. Not for diagnostic or therapeutic applications.