

## Active RhoA

**Catalog Number:** 26904

**Gene Symbol:** RHOA

**Description:** Anti-Active RhoA Mouse Monoclonal Antibody

**Background:** Small GTPases are a super-family of cellular signaling regulators. RhoA belongs to the Rho sub-family of GTPases. Rho proteins play critical roles in many actin cytoskeleton-dependent processes including platelet aggregation, cell motility, contraction, and cytokinesis. It regulates the formation of stress fibers and focal adhesions in fibroblasts and Ca<sup>2+</sup> sensitivity of smooth muscle contraction.

**Immunogen:** Recombinant full length protein of active RhoA

**Tested applications:** IP, IHC

**Recommended dilutions:**

1 µg for 1~2 mg total cellular proteins

**Concentration:** 1 mg/ml

**Host:** mouse

**Clonality:** Monoclonal

**Isotype:** IgG2b, IgM

**Purity:** Purified from ascites

**Format:** Liquid

**Storage buffer:**

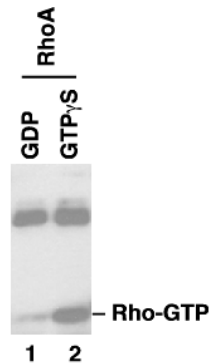
Preservative: no

Constituents: PBS (without Mg<sup>2+</sup> and Ca<sup>2+</sup>), pH 7.4, 150 mM NaCl, 50% glycerol

**Species Reactivity:** Anti-active RhoA antibody recognizes active RhoA from vertebrates.

**Storage Conditions:** Store at -20°C. Avoid freeze / thaw cycles

### Immunoprecipitation and Western blot:



**IP:** anti-active RhoA mAb

**WB:** anti-RhoA mAb

IP/WB analysis of active RhoA protein. Purified recombinant RhoA proteins were loaded with GDP (lane 1) or GTPγS (lane 2). These proteins were immunoprecipitated with anti-active RhoA mouse monoclonal antibody (Cat. # 26904). After SDS/PAGE, the membrane filter was probed with anti-RhoA mouse monoclonal antibody (Cat. # 26007).

For research use only. Not for diagnostic or therapeutic applications.