

TP53(R282W)

Catalog Number: 26076

Gene Symbol: TP53(R282W)

Description: Anti-TP53(R282W) Mouse Monoclonal Antibody

Background: TP53 belongs to the p53 proteins family. It is ubiquitously expressed, acts as a tumor suppressor in many tumor types and induces growth arrest or apoptosis depending on the physiological circumstances and cell type.

Defects in TP53 are a cause of esophageal cancer (ESCR), lung cancer (LNCR), adrenocortical carcinoma (ADCC), choroid plexus papilloma (CPLPA) and so on.

Immunogen: Recombinant TP53(R282W) protein, human origin.

Tested applications: ELISA, WB, IHC

Recommended dilutions:

ELISA: 1:1000-1:5000

WB: 1:1000-1:5000

IHC: 1:50-1:100

Concentration: 1 mg/ml

Host: Mouse

Clonality: Monoclonal

Purity: Purified from ascites

Format: Liquid

Storage buffer:

Preservative: no

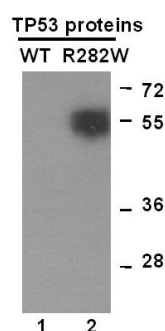
Constituents: PBS (without Mg²⁺ and Ca²⁺), pH 7.4, 150 mM NaCl, 50% glycerol

Species Reactivity: Anti-TP53(R282W)

antibody recognizes TP53(R282W) of vertebrates.

Storage Conditions: Store at -20 °C. Avoid freeze / thaw cycles

Western blot:

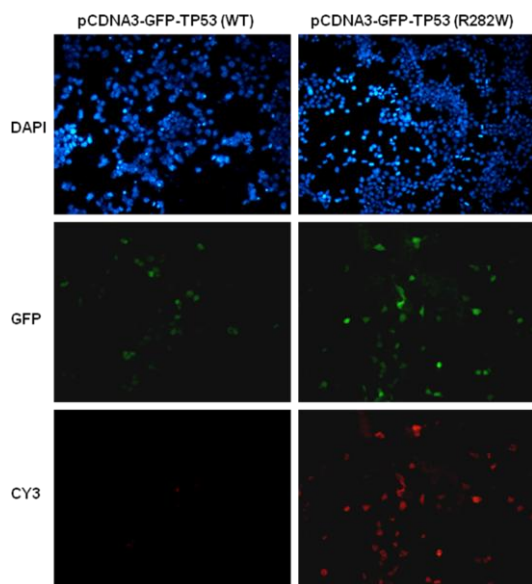


WB: Anti-TP53(R282W) mAb

Western blot analysis of recombinant TP53(R282W) and wildtype proteins. Purified His-tagged TP53(R282W) protein (lane 2, Cat.#10204) and wild type protein (lane 1, Cat.#10202) were blotted with anti-TP53 (R282W) mouse monoclonal antibody (Cat. # 26076).

For research use only. Not for diagnostic or therapeutic applications.

Immunofluorescence:



Immunofluorescence of cells expressing TP53 proteins with anti-TP53 (R282W) antibody.

HEK293T cells were transfected with pCDNA3-GFP-TP53 (WT) plasmid (left column) or pCDNA3-GFP-TP53 (R282W) plasmid (right column), then fixed and stained with anti-TP53 (R282W) monoclonal antibody (Cat. # 26076).

For research use only. Not for diagnostic or therapeutic applications.

24 Whitewoods Lane, Malvern, PA 19355 Tel: (610) 945-2007 FAX: (610) 945-2008
E-mail: sale@neweastbio.com Web: www.neweastbio.com