

TP53(R282W)

Catalog Number: 21165

Gene Symbol: TP53

Description: Anti-TP53(R282W) Rabbit Polyclonal Antibody

Background: p53 protein acts as a tumor suppressor in many tumor types and induces growth arrest or apoptosis depending on the physiological circumstances and cell type. Defects in TP53 are found in many types of cancers.

Immunogen: A synthetic peptide near the C-terminus of human TP53 which includes the mutation of R282W.

Tested applications: ELISA, WB, IHC, IF

Recommended dilutions:

ELISA: 1:1000-1:5000

WB: 1:100-1:1000

IHC: 1:100-1:1000

Concentration: 0.1 mg/ml

Host: Rabbit

Clonality: Polyclonal

Purity: Purified from serum

Format: Liquid

Storage buffer:

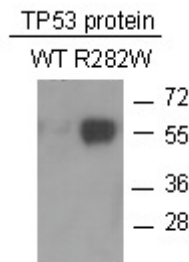
Preservative: no

Constituents: PBS (without Mg²⁺ and Ca²⁺), pH 7.4, 150 mM NaCl, 50% glycerol

Species Reactivity: Anti-TP53(R282W) antibody recognizes TP53(R282W) of vertebrates.

Storage Conditions: Store at -20°C. Avoid freeze / thaw cycles

Western blot:



WB: Anti-TP53(R282W) pAb

Western blot analysis of recombinant TP53(R282W) and wildtype proteins. Purified His-tagged TP53(R282W) protein (Cat.#10204) and wildtype protein (Cat.#10202) were blotted with anti-TP53(R282W) rabbit antibody (Cat.# 21165).

For research use only. Not for diagnostic or therapeutic applications.

24 Whitewoods Lane, Malvern, PA 19355

E-mail: sale@neweastbio.com

Tel: (610) 945-2007 FAX: (610) 945-2008

Web: www.neweastbio.com